

The future of unattended retail

After 50 years of incremental innovation, Boost inc automated retail redefines vending

Boost inc

Why this matters

1960+

Traditional Vending

Selling products where other channels fail



2005+

Connected Vending

Do more with less

- Cashless (= sell more)
- IoT (= service less)



Today

Boost inc - Automated Retail redefines the industry

- Retail-like checkout: baskets, deals, promotions
- New POS types: self-checkouts, coolers, apps
- Media, content – all managed remotely



Broaden product offering
such as Fresh Food,
premium F&B

Enter new customer segments – such as
hospitality, catering

Optimise ROI vs traditional
solutions
+40% LfL Sales
-50% Cost to Serve
>2x ROI

Boost inc today



Boost inc

7

countries

140

employees

400

customers

25k

POS

20m

revenues



Who we serve



Operators

We help innovative operators to transform their offering and streamline their operations to earn more from existing locations & capture future growth opportunities.



OEMs

We give superpowers to leading vending equipment manufacturers and transform their traditional vending equipment into interactive and digital point of sales



Brands & Retail

We help leading brands to build exciting & profitable unattended retail businesses from scratch — by combining design, technology and our operational expertise.

Where unattended retail matters

Workplace

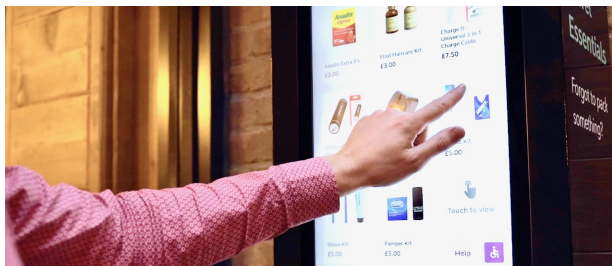
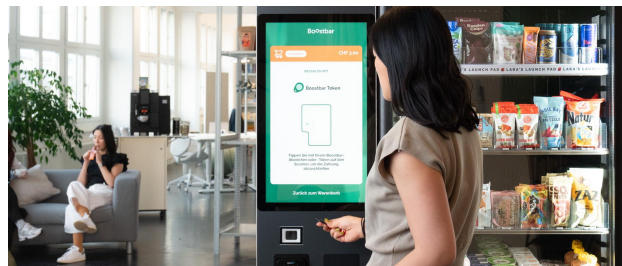
Healthy and sustainable food & beverage concepts to fuel modern workplaces.

Hospitality & Retail

Respond to labour shortage & customer requirements with attractive 24/7 concepts that turn spaces into profit centers, like hotels, bars, universities and hospitals.

Public

Create out-of-the ordinary concepts to reach customers where traditional formats fail, like airports or railway stations.



Our Technology – Vendlive

Boost inc

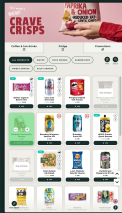
Vendlive Cloud

A shared cloud, allowing operators to connect, manage and optimise their point of sale remotely - powered by data, and AI



Vendlive OS

One user interface bringing retail-like features to any point of sale



Payments

Seamless integration with both physical and digital payment methods

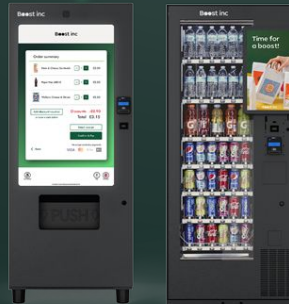


Technology

- Computer Vision
- Remote lock
- RFID



Coolers & markets



Digital Vending



Coffee

Boost inc

Coolers & Markets



Coolers & Markets

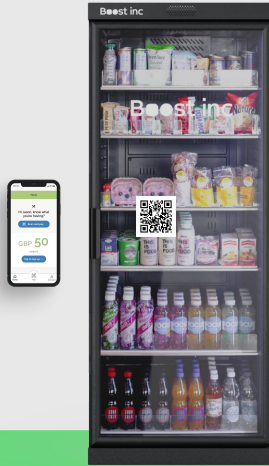
Powering the magic of unattended retail with self-checkout fridges and freezers that help generate higher revenue, less service costs, and better ROI than traditional vending machines.

add-on



Smart Cooler

A touchscreen-enabled fridge or freezer that be expanded with add-ons



QR Cooler

The most minimalist solution for trusted, high throughput locations



Checkout

Self-checkout terminal to power micro markets of any size.

Smart Coolers

Our top-selling smart coolers for fresh food, snacks, cold drinks and frozen food, especially suited for honesty-based settings like workplaces & hospitality.

Boost product sales

Upselling via deals & product recommendations

High-end touchscreen

For a seamless user experience and compelling advertising

Theft control

Take action in the case of fraudulent transactions



Optional
Vision AI



ABOUT



Recommended products
Fresh food, snacks & drinks
Frozen food



Ideal location
Workplace & Semi-Public

SPECIFICATIONS

Capacity

80 SKUs, 512 items

Screen

24" touchscreen

Dimensions (installed)

Height: 1930 mm

Width: 1105 mm (+100 mm Vision)

Depth: 760 mm

Temperature

Fridge: 1° – 8°C

Frozen: -18° – -22°C

Connectivity

4G (default), WiFi, or
hardwire

MODELS

- Smart Fridge
- Smart Freezer
- Smart Fridge - Vision
- Smart Freezer - Vision

ACCESSORIES

- Custom branding
- Roller shelf merchandising system
- Pusher shelf merchandising system
- Camera
- QR & RFID Scanner
- Add-on Fridge or Freezer

Smart Coolers: How vision AI technology works

For specific locations that require it, we provide you with additional security - but without the hassle and constraints of weight scales and RFID tags



MONITOR

The cooler records products being removed by customers



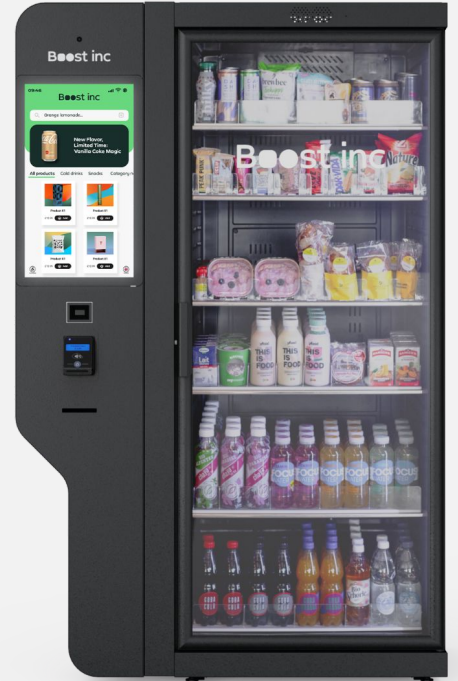
FLAG

Incorrect transactions are flagged by the system



ACT

Incorrect transactions can be re-charged from the customer's card and the customer can be blocked



QR Cooler

Standalone fridge with easy QR-payment

Incredibly simple vending

Connect to fridge by scanning a QR code, select products, and pay

More SKUs with higher capacity

Offer more products in the same retail space used by traditional vending

Improve customer experience

Higher confidence in operation, receiving product everytime leading to better user experience and more loyal customers



ABOUT



Recommended products
Fresh food, snacks & drinks
Frozen food, ice cream



Ideal location
Office and hospitality office

SPECIFICATIONS

Capacity
Up to 80 SKUs, 500+ items

Dimensions (installed)
Height: 1930 mm
Width: 750 mm
Depth: 760 mm

Temperature
Fridge: 1° – 8°C
Frozen: -18° – -22°C

Connectivity
4G (default), WiFi, or
hardwire

MODELS

- QR Fridge
- QR Freezer
- QR Fridge - RFID
- QR Freezer - RFID
- QR Fridge - Vision (Coming soon)
- QR Freezer - Vision (Coming soon)

ACCESSORIES

- Custom branding
- Roller shelf
- Pusher shelf

Checkout

A checkout terminal plays a crucial role in establishing your micromarket, offering an inviting shopping experience ideally suited for workplaces and hospitality venue, with the possibility to run promotions, loyalty programs, bundle-deals to increase basket purchases

Create your micromarket dream

Modular and standalone operation

Connected - from market to cloud

Allow for a seamless customer experience

Inviting shopping experience

High-end product design and seamless user interface



ABOUT



Recommended products

Fresh food, snacks & drinks



Ideal location

Office and Hospitality setting

SPECIFICATIONS

Screen

22" touchscreen

Dimensions

Height: 550 mm

Width: 490 mm

Depth: 275 mm

Connectivity

4G (default), WiFi, or hardwire

MODELS

- Checkout

ACCESSORIES

- Custom branding
- Payment terminal
- QR/Rfid Scanner
- Add-on Fridge or Freezer

Boost inc

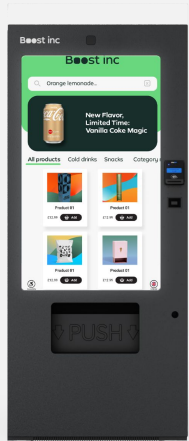
Vending



Digital Vending

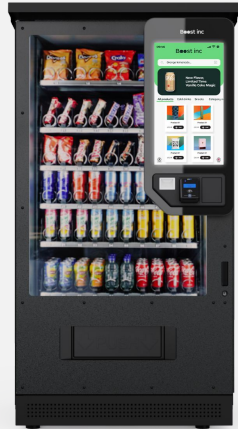
Revolutionizing vending – featuring high-end product design and intuitive user interfaces to rekindle your customer’s passion for vending.

Elevate your product sales with our advanced user interfaces and optimize operations seamlessly with the Vendlive cloud.



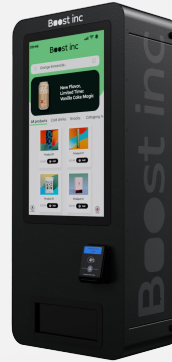
Full-screen Vending

Combines the possibilities of e-commerce with a physical presence. This is a shop ranging from snacks & drinks to electronics & accessories.



Smart Vending

Classic vending machines super-powered by interactive touchscreens.



Mini Vending

Compact machine design, either wall-mounted or stand alone, allows you to retail in locations you otherwise would not be able to access.

Available for compatible OEM



Digitalisation Kits

Convert OEM equipment into interactive, connected vending machines.

Full screen vending

Full screen digital vending offers the endless possibilities of e-commerce with a physical presence. This is a shop ranging from snacks & drinks to electronics & accessories.

Premium shopping experience

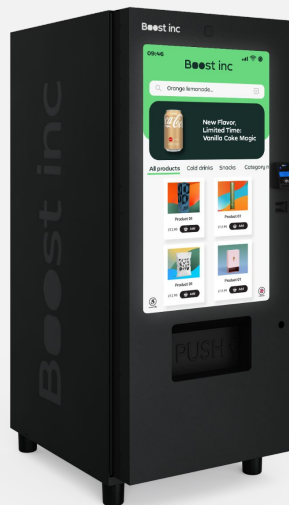
Compared to traditional vending machines

Large display for advertising space

Make the most of your locations by increasing advertising revenues

Integrate e-commerce into vending

Utilise timed product videos, promotions, meal deals, and other upselling retail tools



ABOUT



Recommended products
Fresh food, snacks & drinks
Non-food items: cosmetics, toiletries, gifts, books, small electronics



Ideal location
Office and Hospitality setting

SPECIFICATIONS

Capacity (max)
80 SKUs, up to 480 items

Screen
42" touchscreen

Dimensions (installed)
Height: 1930 mm
Width: 800 mm
Depth: 1115 mm

Temperature
2° - 12°C

Connectivity
4G (default), WiFi, or hardwire

Energy consumption
4030 kWh/year (refrigerated)
1489 kWh/year (ambient)

Energy Class
Class E

KEY FEATURES

- Extra large high-definition touchscreen
- Channel dispensing
- Flap at accessibility-friendly level

MODELS

- Premium (Jofemar)

ACCESSORIES

- Custom branding
- QR & RFID Scanner
- Camera for CCTV
- Add-on vending machine

Smart vending

The best of both worlds, with a touchscreen and a glass front. Show off your products to the world whilst providing a unique digital experience.

Elevated shopping experience

Surpassing traditional vending machines

High-end touchscreen for e-commerce

Smooth user experience, meal deals, product promotions and captivating advertising

Connected machines

Make your entire vending estate connected



3 models
Premium
Indoor
Outdoor



ABOUT



Recommended products
Fresh food, snacks & drinks
Non-food items: cosmetics, toiletries, gifts, books, small electronics



Ideal location
Office and Hospitality setting

SPECIFICATIONS

Capacity

55 SKUs, up to 480 items, depending on model

Screen

24" touchscreen

Temperature

2° – 12°C

Connectivity

4G (default), WiFi, or hardwire

KEY FEATURES

- Large high-definition touchscreen
- Pusher or spiral dispensing
- Belt-driven dispensing with elevator (Ideal for products of unconventional sizes) (Premium machine only)

MODELS

- Premium (Jofemar)
- Indoor (Sandenvendo)
- Outdoor (Sandenvendo)
- ScreenKit Outdoor (kit only)
- ScreenKit Indoor (kit only) (coming soon)

ACCESSORIES

- Payment terminal
- Custom branding
- Age verification
- Pusher or Spiral shelf
- Camera
- QR & RFID Scanner

Mini vending

Our small secret-hero vending machine for high-value products like cosmetics, vapes, and toiletry products.

Premium shopping experience

For high-value products (vaping, cosmetics, other)

High-end touchscreen

For an engaging user experience and appealing advertising in bars, clubs, and other hospitality settings

Where others don't fit

Perfect for unconventional locations like bars, clubs, restrooms where form factor matters



ABOUT



Recommended products
Vapes, cosmetics, toiletry, small electronics, watches other high-value items



Ideal location
Hospitality (bars, clubs, cruise ships)

SPECIFICATIONS

Capacity
8 SKUs, 200 items

Screen
24" touchscreen

Dimensions
Height: 1000 mm
Width: 445 mm
Depth: 280 mm

Temperature
Non-refrigerated

Connectivity
4G (default), WiFi, or hardwire

Energy consumption
345 kWh/year

KEY FEATURES

- Up to 8 channels
- Large high definition screen
- Wall mounted

MODELS

- Wall mounted
- Freestanding

ACCESSORIES

- Stand
- QR/ RFID Scanner
- Age verification
- Custom branding
- Camera

ScreenKit

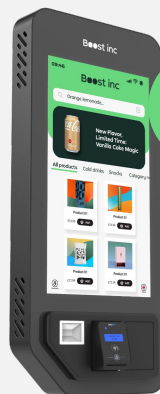
Enhance traditional vending machines with digital capabilities, incl connectivity using a premium touch screen, real-time, and flexible cashless and digital payment options.

High-end touchscreen

For flashy user experience and appealing advertising in bars, clubs, and other hospitality settings

Where others don't fit

Perfect for unconventional locations like bars, clubs, restrooms



Designed for IP65 Outdoor Proof



ABOUT



Recommended products
Fresh food, snacks & drinks
Non-food items: cosmetics, toiletries, gifts, books, small electronics



Ideal location
Outdoor, public, workspace, hospitality

SPECIFICATIONS

Capacity
Dependent on the machine

Screen
24" or original

Colour
Customisable

Connectivity
4G (default), WiFi, or hardwire

Integration
MDB or direct integration

MODELS

- Outdoor ScreenKit

ACCESSORIES

- QR/ RFID Scanner
- Age verification
- Add any payment device

Boostbox

Connect any vending machine or cooler to our online platform, Vendlive. Gain insights and increase revenue with real time data. Boostbox also allows to attach any payment terminal or QR-payment capability

Live view from the field

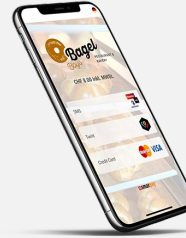
With real-time sales reporting and alerts

Avoid unnecessary operating expenses

Optimise your merchandising and servicing teams

Flexible payment capability

including card and digital payment options



ABOUT



Compatible with
Any MDB or CSI compatible machine



Ideal location
Any

SPECIFICATIONS

Screen compatibility

No

Dimensions

Height: 44 mm
Width: 170 mm
Depth: 170 mm

Connectivity

4G (default)

Requirements

MDB, CSI/CCI

KEY FEATURES

- 4G connectivity
- Connect any payment terminal
- QR payment, App-Wallet and WebApp payments
- Connect to Vendlive and your existing VMS

ACCESSORIES

- Add any payment device

Boost inc

Coffee



Coffee

Premium digital coffee experience combining a modern consumer experience with cost-efficient operations



Custom Solutions



Custom Coffee Tower

Design your own coffee tower with our universal digitalisation kit for any fresh or powder milk tabletop machine

Coffee Tower

Showcase your brand & provide premium coffee experiences using digital technology



Coffeebox

Add payment to your existing coffee vending & connect coffee machines online and with Vendlive Cloud

Coffee Tower

Launch your unattended coffee shop with our digital barista machine. Delight customers with delicious coffee and with our add-on vending machine build grow their basket by combining vending to create the ultimate meal deal

Coffee shopping experience

With large touch-screen and wide product selection

Accept any cashless and digital payment

Offer all cashless payment methods and digital payment methods incl. employee badge payments



ABOUT



Recommended products
Coffees, Hot Chocolate, Tea



Ideal location
Office and Hospitality setting

SPECIFICATIONS

Capacity
150 coffees /day

Screen
32" touch screen

Connectivity
4G (default), WiFi, or
hardwire

Energy consumption
753 kWh/year

MODELS

- Neo
- Coti (*coming soon*)

ACCESSORIES

- QR/ RFID Scanner
- Add-on fridge/vending (combo)

Coffee Box

Upgrade any table top coffee unit with real-time connectivity and flexible payment options.

Real-time sales insights

Connect your machine and see all sales transactions remotely, to improve operations and reduce waste

Accept any card and any digital payment

Turn any coffee machine into a line-breaker and offer local and employee badge payments

Increase consumer repeat-purchases

Loyalty programs and rewards to help drive consumers back to your coffee machines



New design coming soon



ABOUT



Compatible with
Any MDB or CSI/CCI compatible machine



Ideal location
Office, retail and hospitality setting

SPECIFICATIONS

Dimensions
Height: 386 mm
Width: 180 mm
Depth: 177 mm

Connectivity
4G (default), WiFi, or hardwire

Requirements
MDB, CSI/CCI

KEY FEATURES

- 4G Connectivity
- Integrates with VMS

MODELS

- Coffee Box

ACCESSORIES

- QR/ RFID Scanner
- Payment device

One solution to manage it all

Sales & marketing, product, operations, finance and customer care:

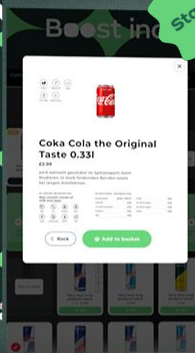
Our cloud-based management back-office Vendlive takes connectivity beyond operations and provides you with the tools to optimise your business as a whole.



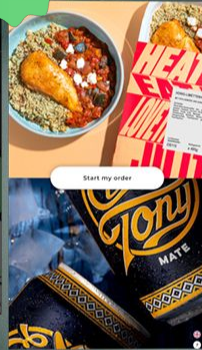
Interactive user experience, designed for conversion



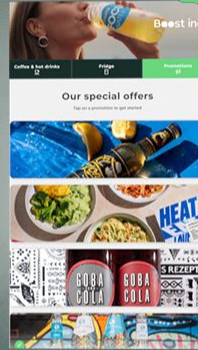
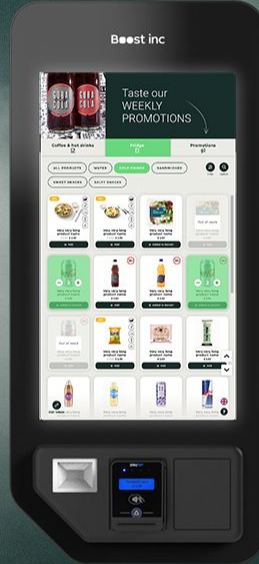
And more...



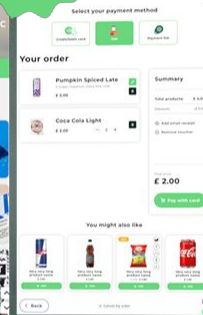
Product
Nutritional
Information



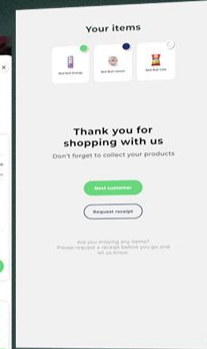
Media &
Advertising



Dynamic Pricing,
Promotions



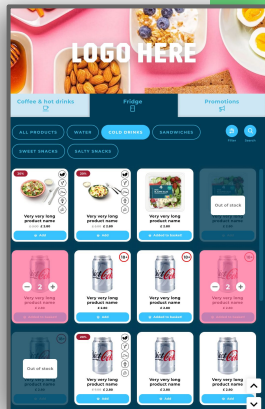
Various
Payment
Options



...And more



One UI for endless possibilities



Bi-directional Telemetry

Connectivity
Real-time Sales Reporting
Health Monitor
Stock & Planogram Mgmt
Price Updates



Customisation

Theme customization
Product images & content
Screensavers



Digital Payments

QR payments
Apps & Wallets



Media & Promotions

Bundle promotions
Dynamic promotions,
e.g. expiry date,
time-base



Advanced Retail

Conversion tracking
Digital Vouchers
Loyalty program
Dynamic Pricing



Flexible Integrations with 3rd Party Solutions

Age Control
API access

And the best... Vendlive flawlessly connects your machines with your business

Vendlive®

The unifying layer to operate your machine estate remotely and connect with your business (ERP, PIM, CMS, CRM).

Vending Management System (VMS) Enterprise Resource Planning (ERP) Product Information Management (PIM) Customer Relationship Management (CRM)



- Category management
- Loyalty & promotions
- Health monitoring
- Sales reporting
- Stock management
- Data analytics
- Advertising



Apps:

Turning phones into flexible, personal self-checkout experiences



Accept any digital payment without costly hardware

Scan & Pay · Automatic top-ups · Purchase history



Engage with consumers in the most personal way

Personal Loyalty · Notifications



Turn any phone into a self checkout terminal

Seamless & convenient

VISA

Mastercard

TWINT

Apple Pay

Google Pay

reka

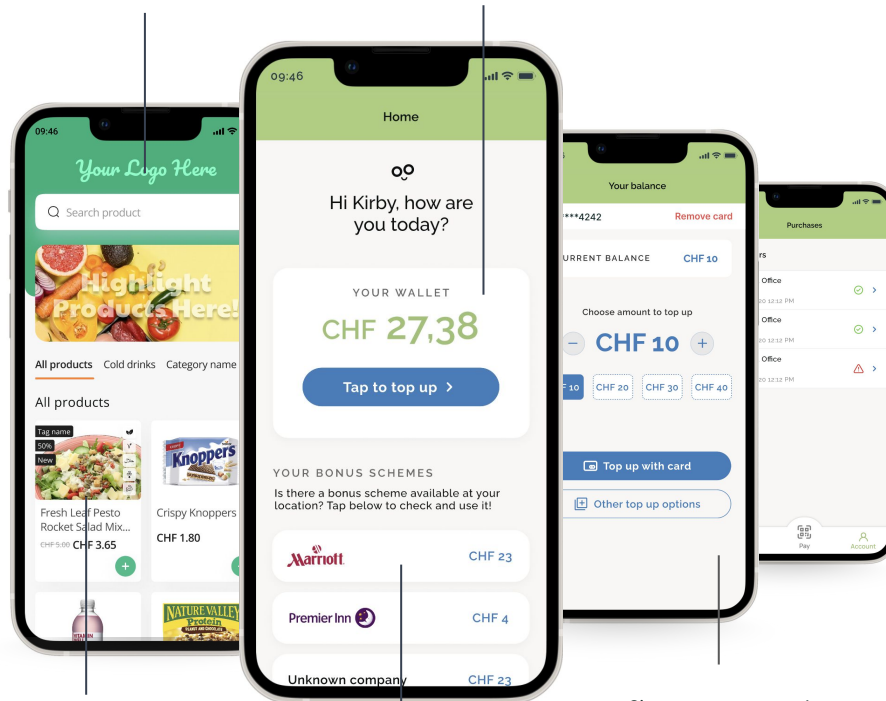
LUNCH CHECK

PayPal

Boost inc

Personalise your app experiences with custom branding

All essential information in one place



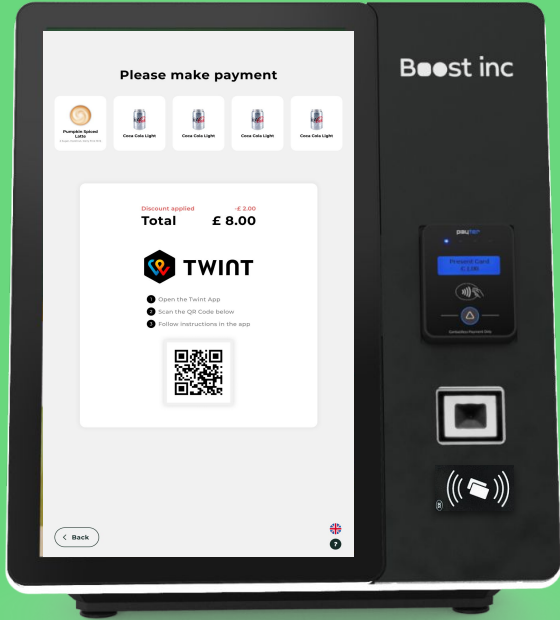
Purchase products directly from your phone: No on-machine screen needed

Complete the personal wallet with individual Bonus & Loyalty

Give consumers control over their money & transactions

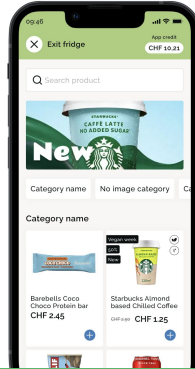
Payments

Flexible & seamless, allowing you to set up payments according to you and your audience's need.



Standard payment

Your own App / WebApp



- Access via scanning a QR code
- Can be paired with payment fobs



TWINT PayPal
reka LUNCH-CHECK+

Further payment methods

Online payment / integrations



- Pay via QR code
- Full flexibility without additional hardware



Standard payment

Contactless payments



Apple Pay Google Pay VISA mastercard

Further payment methods

Badges



- Add the benefits of User identification to your vending offering

LEGIC MIFARE

Our customers are reinventing vending





VINNY

Healthy vending in a new outfit: Supporting a startup unleash the power of branding



MACHINE TYPE
Smart vending machine



PRODUCT TYPE
Snacks & drinks



WHAT'S SPECIAL?
Complete branded experience, from machine to user interface



LOCATION
United Kingdom



HOFMANN'S *To go*

HOFMANN'S TO GO

Carving out a new market for a catering supplier: Making healthy, affordable meals accessible directly to businesses of all sizes



MACHINE TYPE
Smart Freezer



PRODUCT TYPE
Frozen Meals



WHAT'S SPECIAL?
Supports Germany's complex employee meal subsidising programme



LOCATION
Germany



SIPPLE

HYDRATION STATIONS

SIPPLE

Made-to-brand water refill stations with bottle vending — including a playful, bespoke user interface. Making refilling water very cool.



MACHINE TYPE
Custom-made
refill stations



PRODUCT TYPE
Refill water, still or
sparkling - also vends
reusable bottles



WHAT'S SPECIAL?
Custom designed,
from metalwork to
user interface



LOCATION
United States,
United Kingdom



Boostbar

BOOSTBAR

Sustainable and healthy meals, snacks, drinks and coffee for companies of all sizes.



MACHINE TYPE

Micro Market, smart fridges, vending & coffee machines



PRODUCT TYPE

Frozen meals, snacks, drinks & coffee



WHAT'S SPECIAL?

Smart fridges instead of vending machines in work spaces



LOCATION

Switzerland





VUSE

Vaping products supplied
in clubs and bars



MACHINE TYPE
Mini vending



PRODUCT TYPE
Vaping



WHAT'S SPECIAL?
Custom designed,
from metalwork to
user interface



LOCATION
United Kingdom



Premier Inn

PREMIER INN

An automated setup in hospitality can do so much more: Buy your pillows send someone flowers, or even pay for your parking. All from the one vending setup.



MACHINE TYPE

Coffee tower, full screen vending add-on vending



PRODUCT TYPE

Coffee, snacks, drinks, electronics & towels



WHAT'S SPECIAL?

Works like a 24/7 concierge service, incl. electronics, toiletry, parking assistant or a gift delivery service.



LOCATION

United Kingdom





UCC

Introducing a new premium coffee-to-go concept to the market



MACHINE TYPE
Custom coffee tower



PRODUCT TYPE
Coffee



WHAT'S SPECIAL?
Winner of the Innovation Challenge Award 2021



LOCATION
Europe





H & M

Reward loyal customers and drive new membership signups with our experiential offerings. H&M gifted customers who scanned member QR codes with a free beanie.

Meet the Love machine!



MACHINE TYPE
Full screen Vending



PRODUCT TYPE
Clothing & Cosmetics

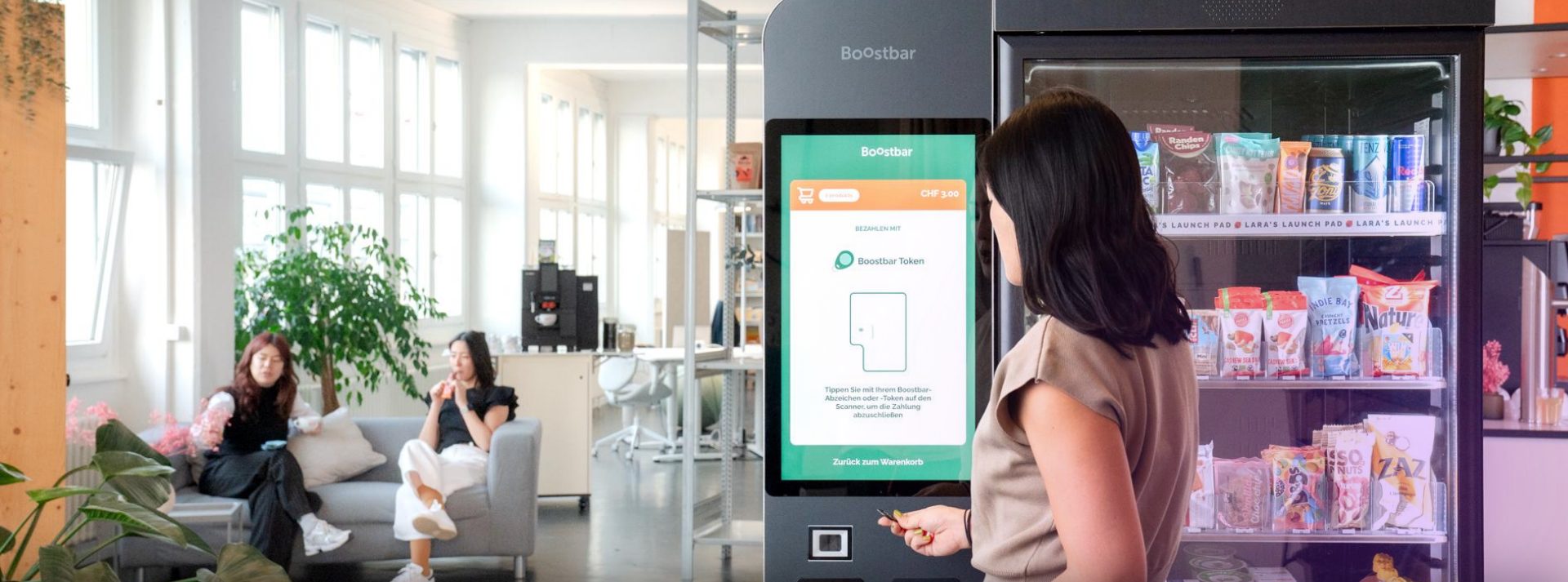


WHAT'S SPECIAL?
Custom user experience for large brand activations



LOCATION
United Kingdom





Boost inc

www.boostinc.com

London Office

hello@boostinc.com
+44 (0)207 726 8575

Boost inc
Unit 41, iO Centre
Armstrong Road
London
SE18 6RS
United Kingdom

Zurich Office

hello@boostinc.com
+41 (0) 44 545 27 45

Boost inc
Grubenstrasse 45
8045 Zurich
Switzerland